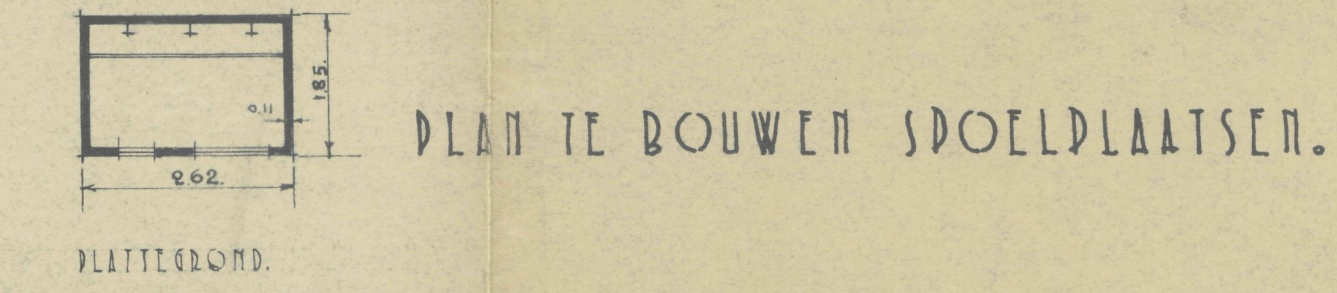
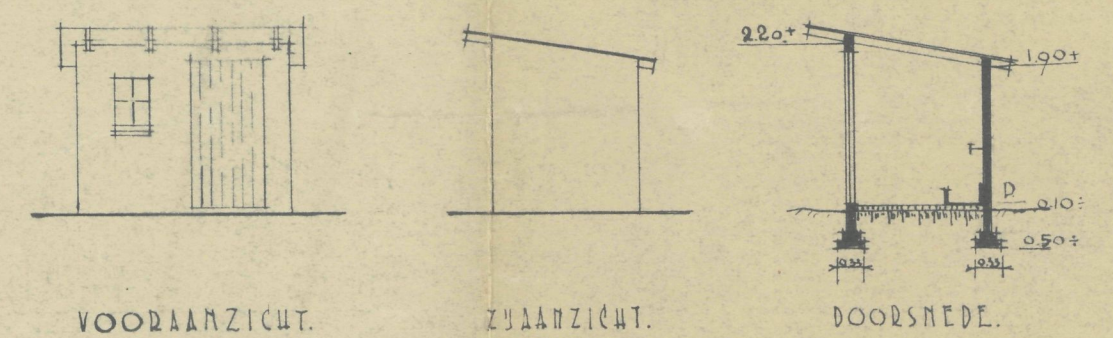
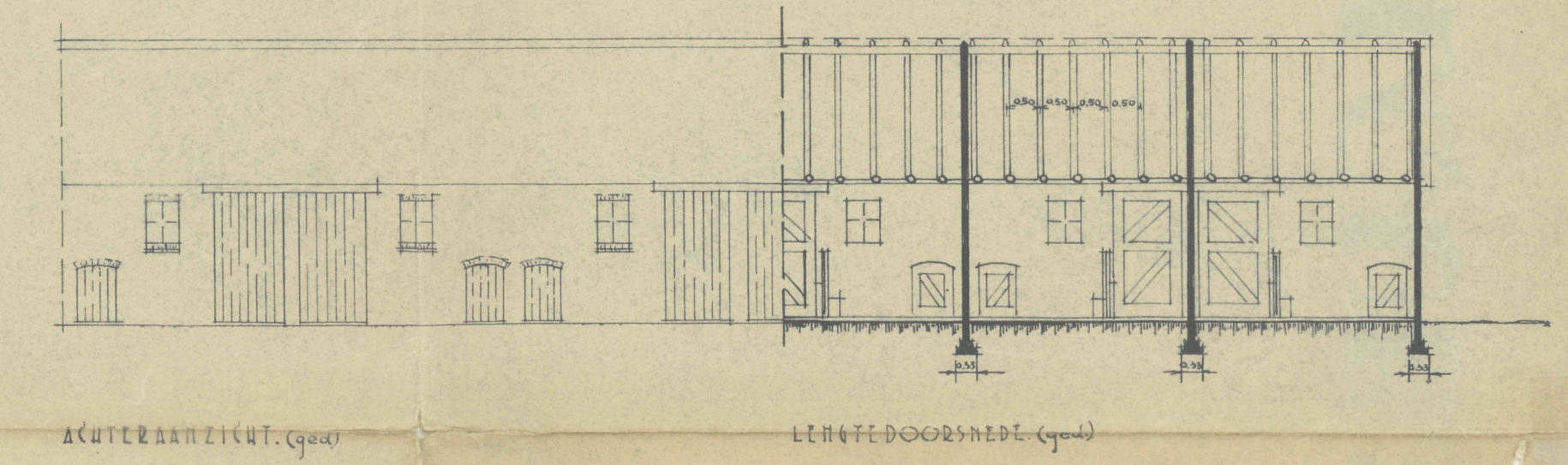
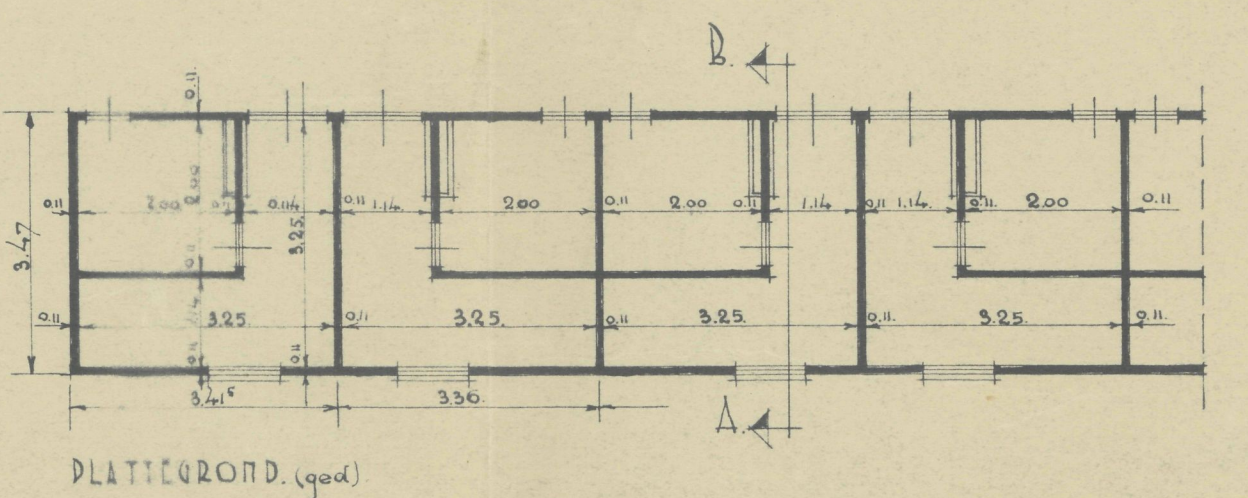
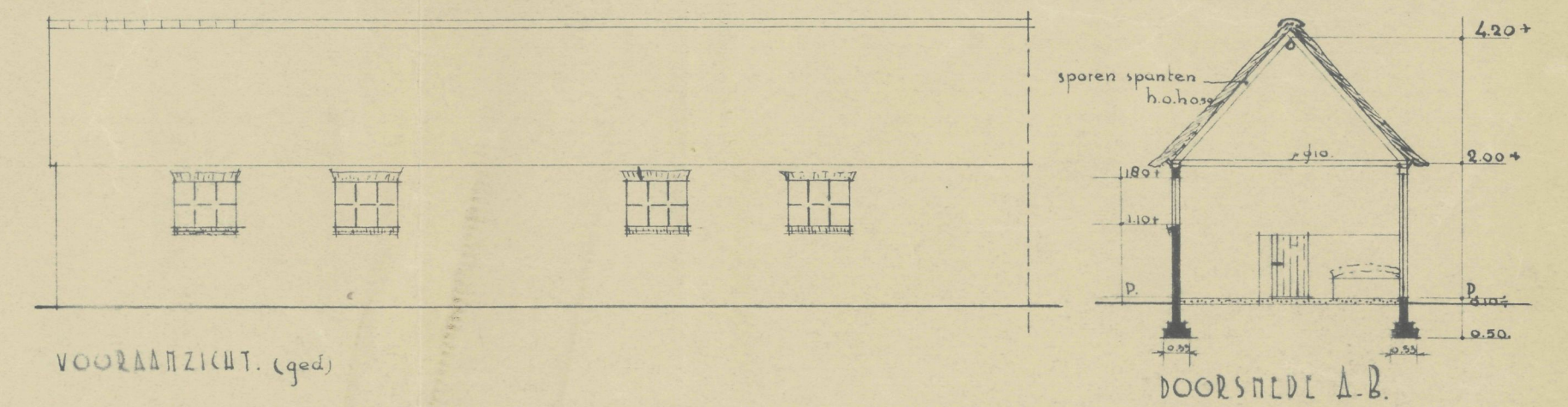
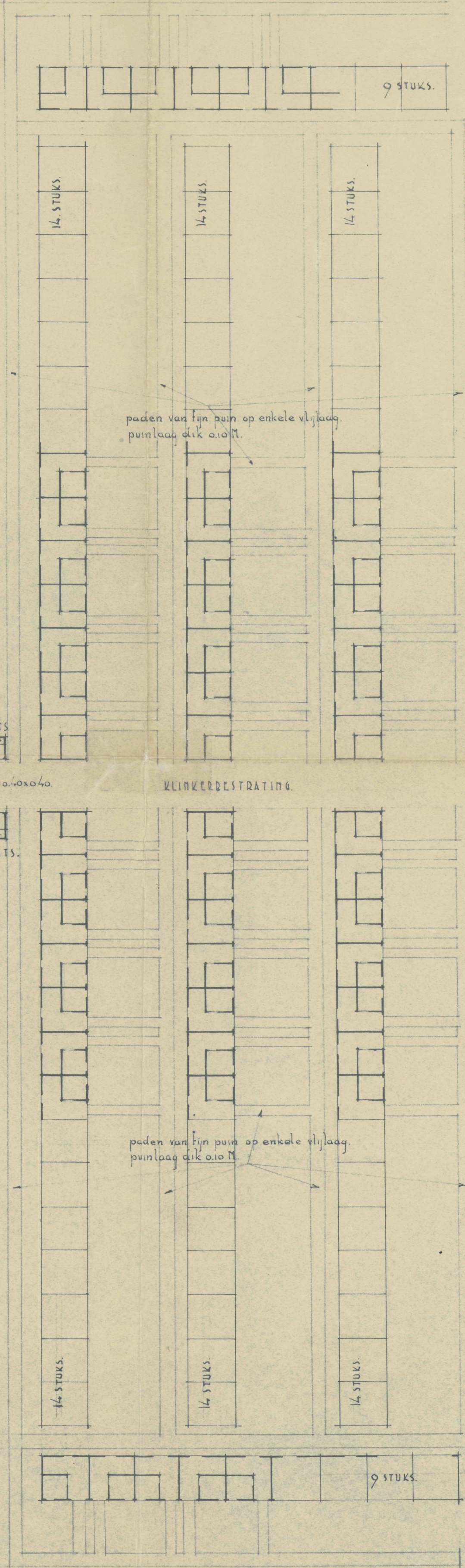


PLAN TE BOUWEN SCHUURTIJES.



PLAN TE BOUWEN SPOELPLAATSEN.

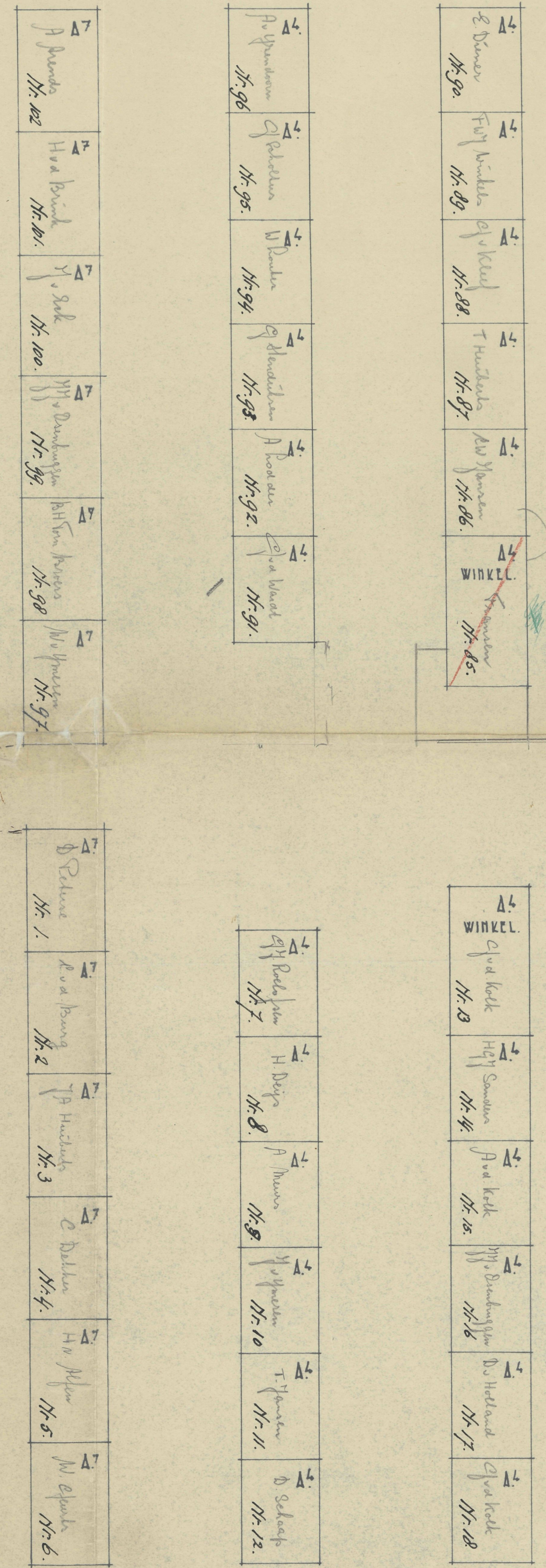
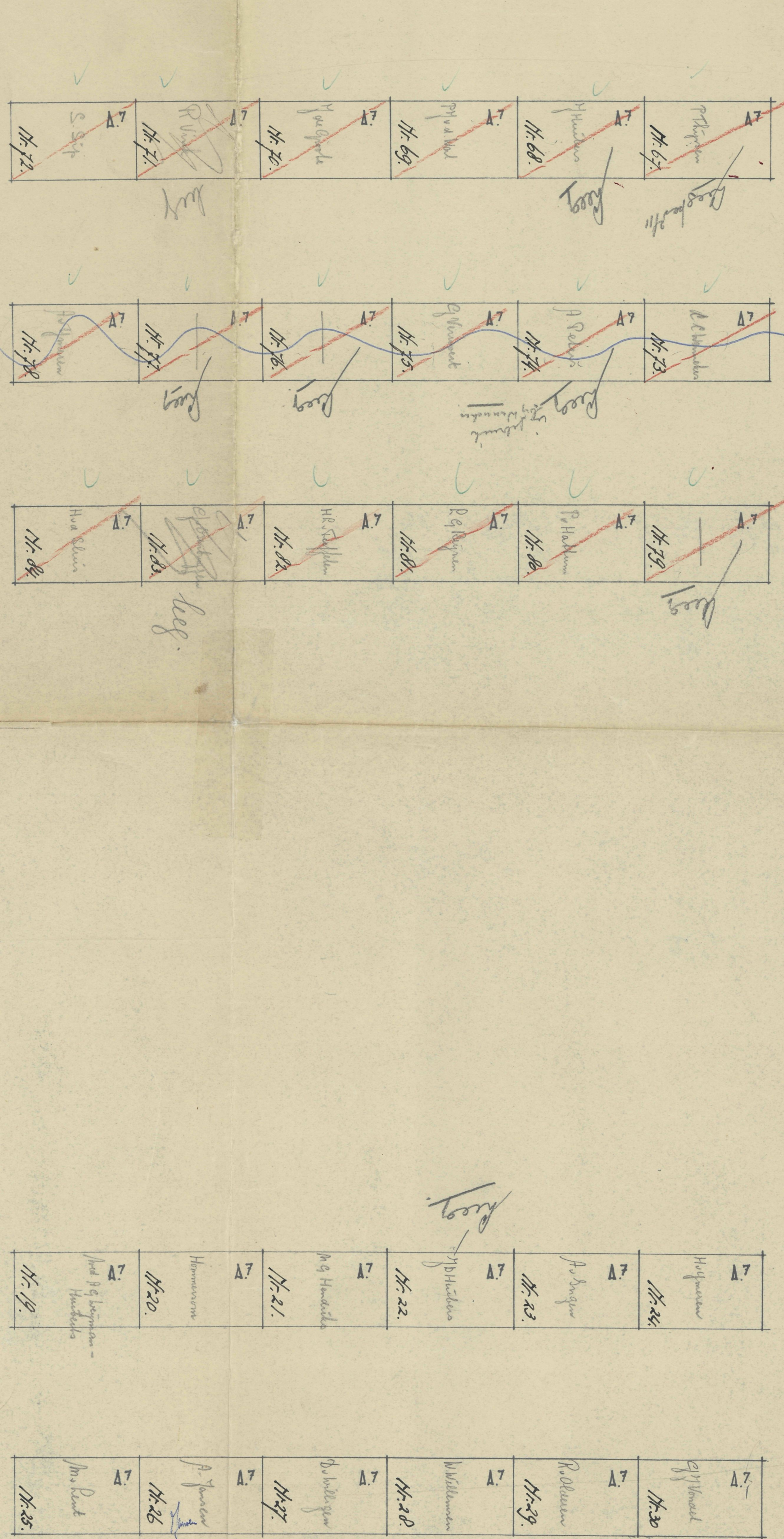
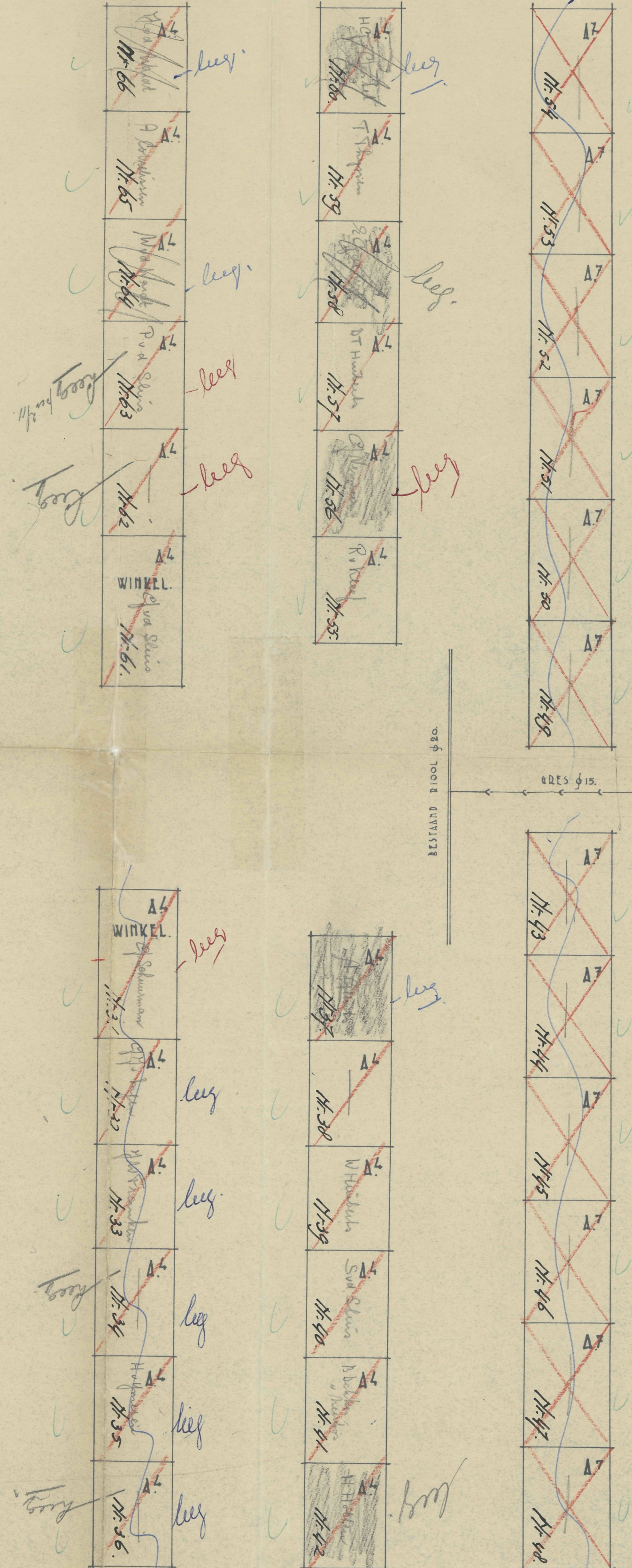
Stoof



paden van lijn paus op enkele vlijdag
pauze laag dik 0.10 M.

paden van lijn paus op enkele vlijdag
pauze laag dik 0.10 M.

GEM. WERKEN KESTEDEN.			
BETREFT: TE BOUWEN SCHUURTIJES OP HET HOOD- WOHINGENTERREIN.			
SCHAAL:	1:250, 1:100	BEMERKINGEN.	
DATE:	8-1-46		
GETEKEND:	7		
GECORRIGERD:			
BLAD:	23.		



Ingang.

Af. grote noodwoningen.
A4. kleine noodwoningen.

19075

Tischbecher 1907